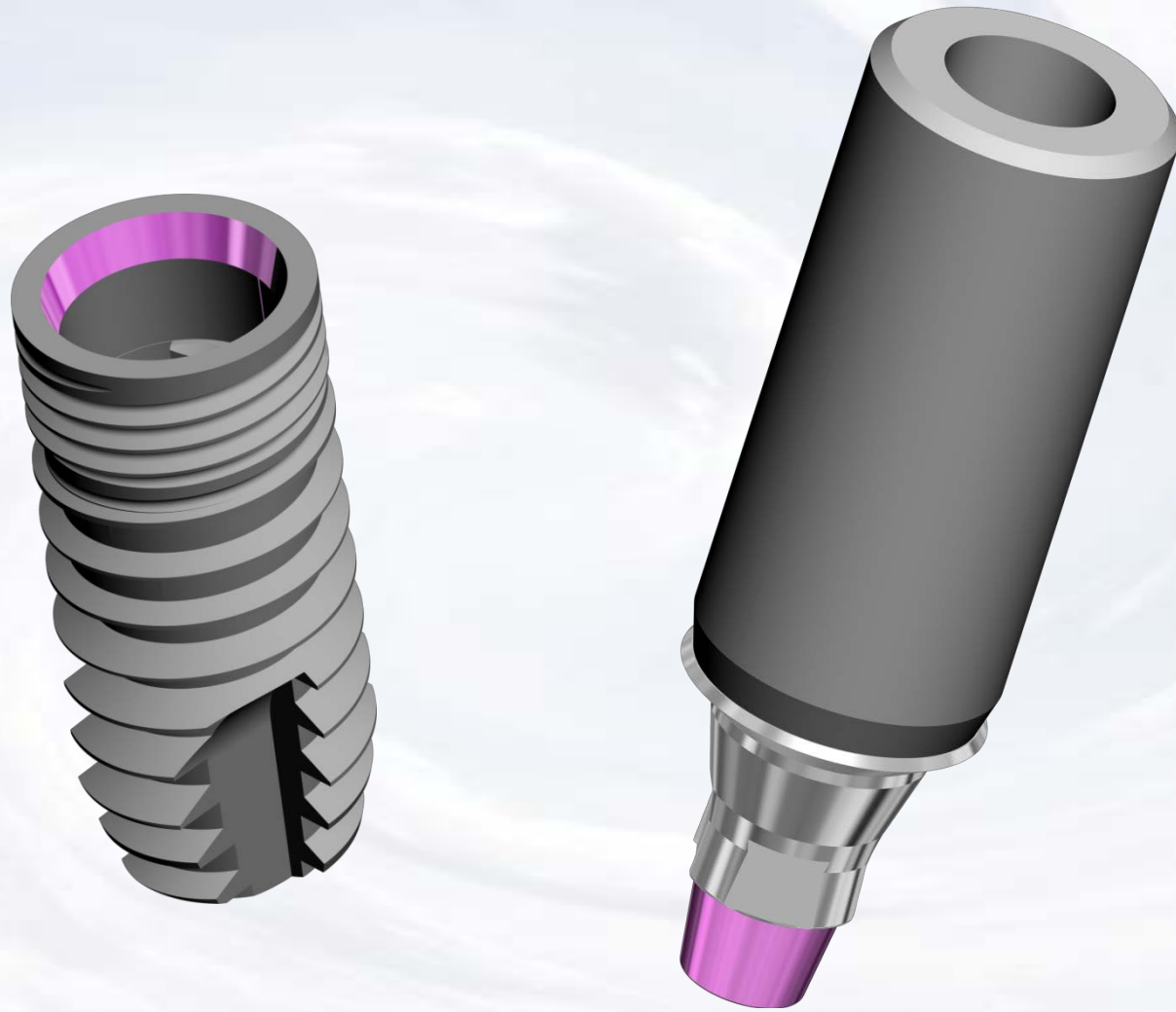


Quattro UCLA Abutment



Blue Sky Bio

Quattro UCLA Abutment



Choose healing abutment



4.8 x 3mm Healing Abutment, Regular Platform, Quattro System

HSQR4803



4.1 x 3mm Healing Abutment, Narrow Platform, Quattro System

HSQN4103





Healing abutment in place

The presentation that follows lists only one combination of parts
Obviously the clinical situation may call for substitution of another part on this slide



Blue Sky Bio

Quattro UCLA Abutment

	Size	Part #
	Torque/Ratchet Wrench	TR-900-01
	Thumbwheel/ITI Wrench Adapter	ITI-Adapter
	.048 Hex Driver short	SDS048
	.048 Hex Driver long	SDL048

Prosthetic instruments needed



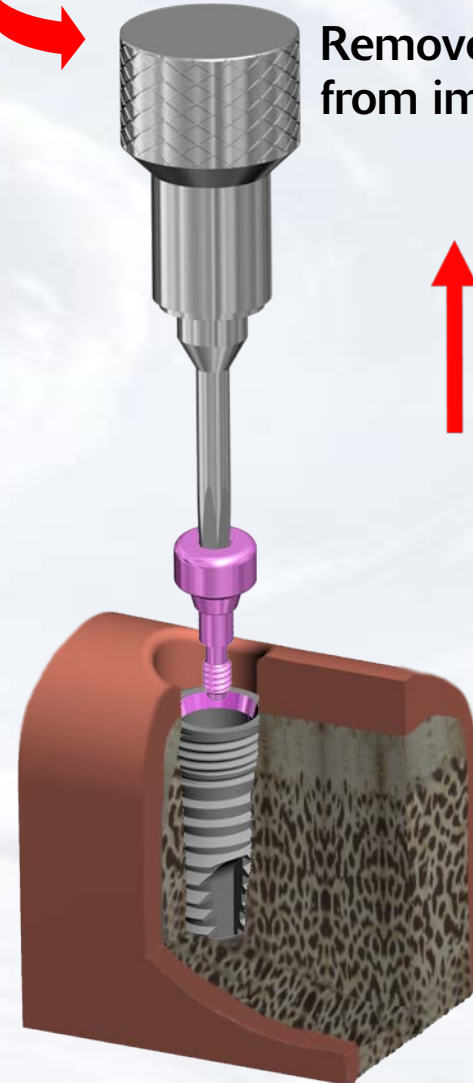
Blue Sky Bio

Quattro UCLA Abutment

Assemble screw driver with
Thumb Knob



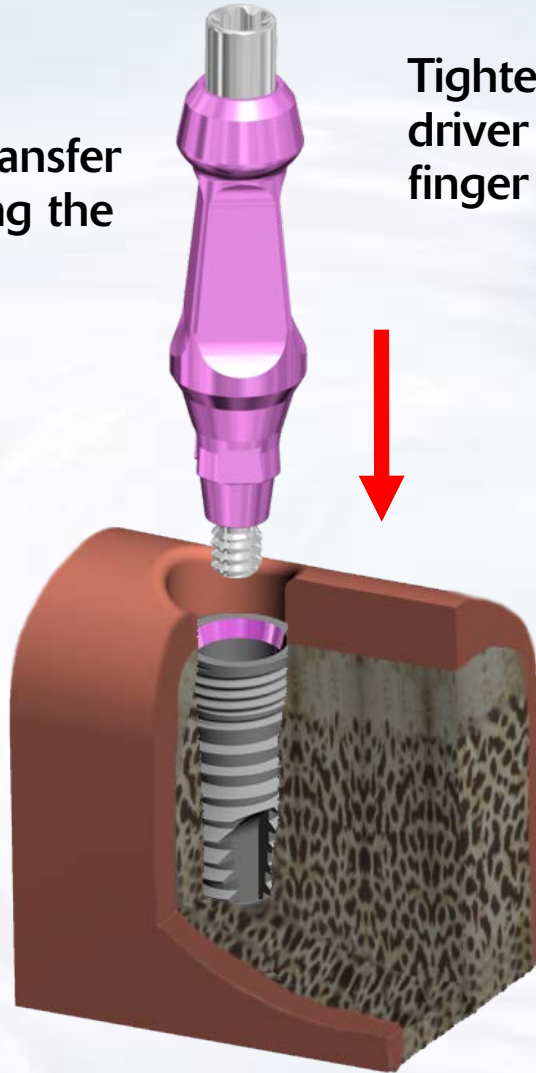
Remove healing abutment
from implant



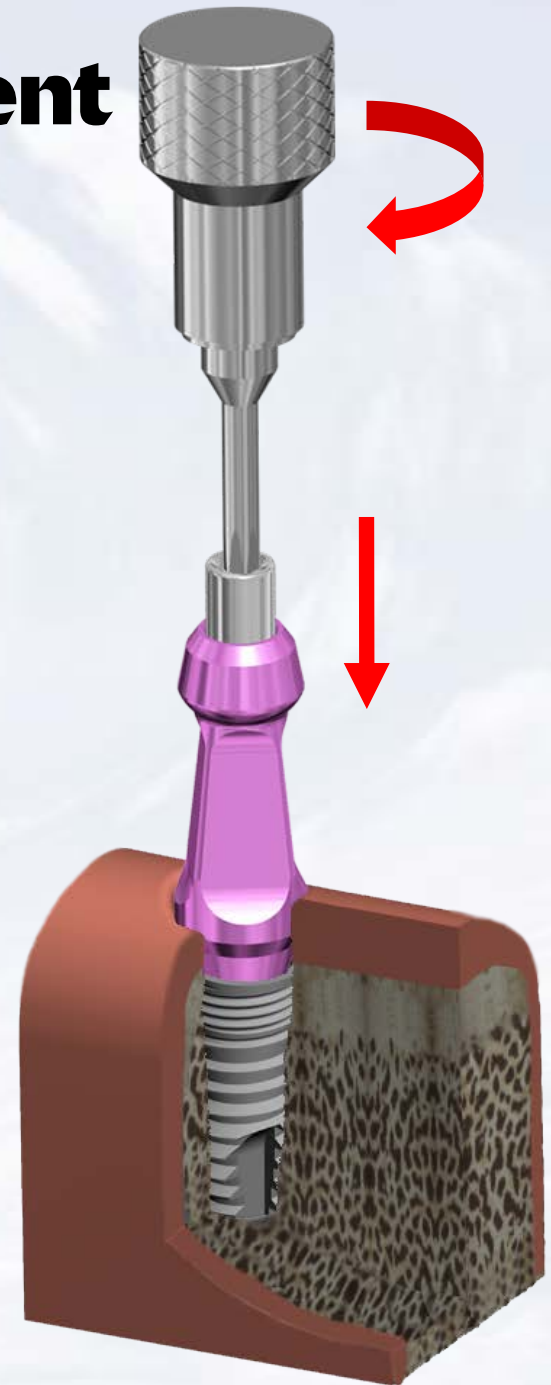
Blue Sky Bio

Quattro UCLA Abutment

Insert the Impression Transfer into the implant ensuring the appropriate orientation



Tighten the screw with the driver assembly with light finger force



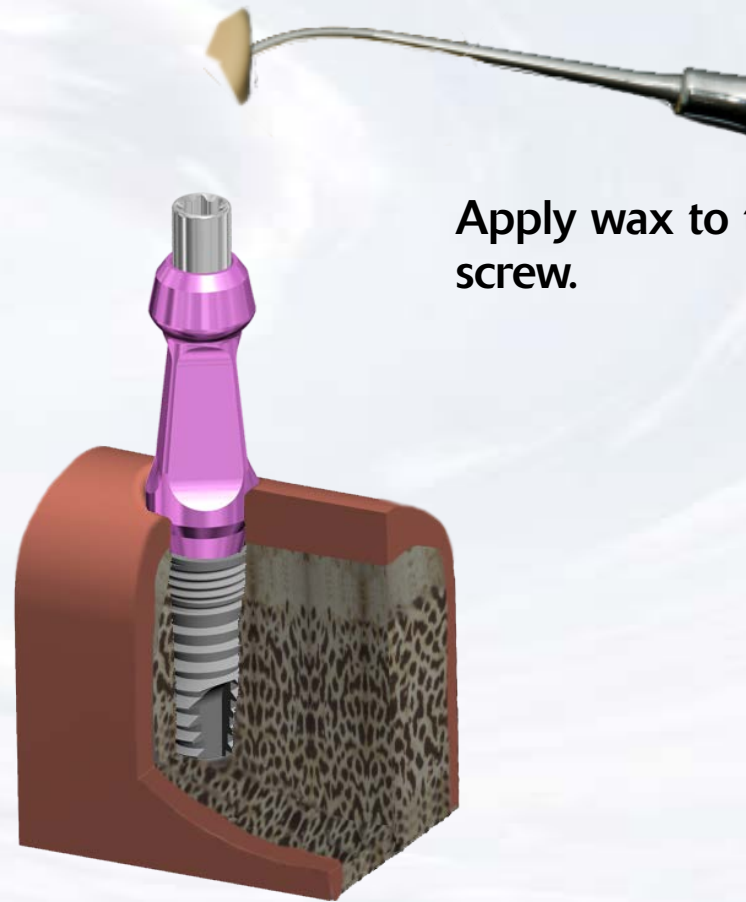
Blue Sky Bio

Quattro UCLA Abutment

Remove screwdriver
assembly



Apply wax to the top of the
screw.



Blue Sky Bio

Quattro UCLA Abutment

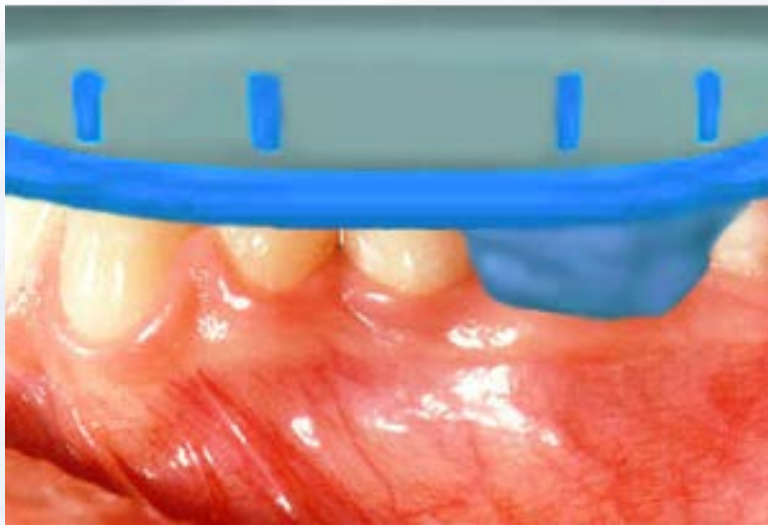


Inject impression material around the impression transfer

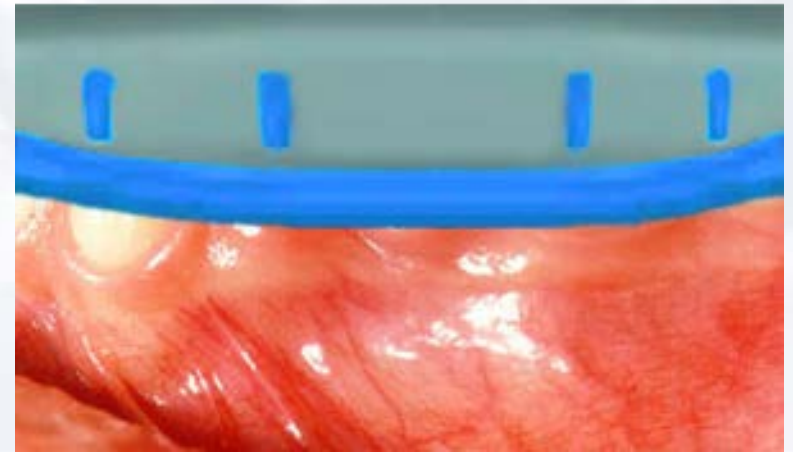


Blue Sky Bio

Quattro UCLA Abutment



Insert tray with impression material

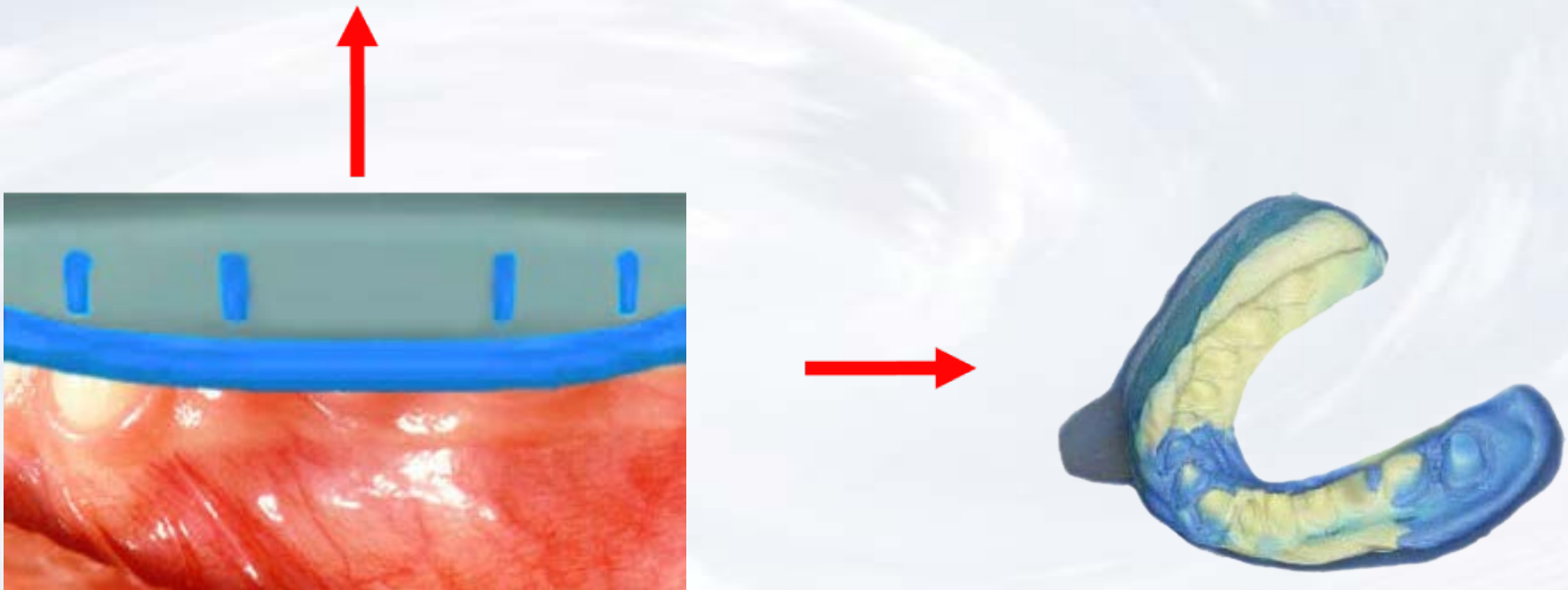


Seat impression to capture dental arch



Blue Sky Bio

Quattro UCLA Abutment



Remove the impression from the mouth when material has set

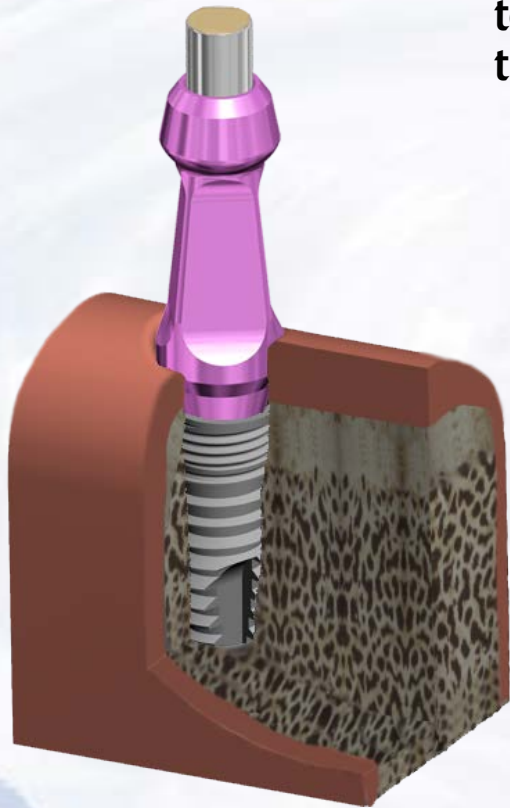


Blue Sky Bio

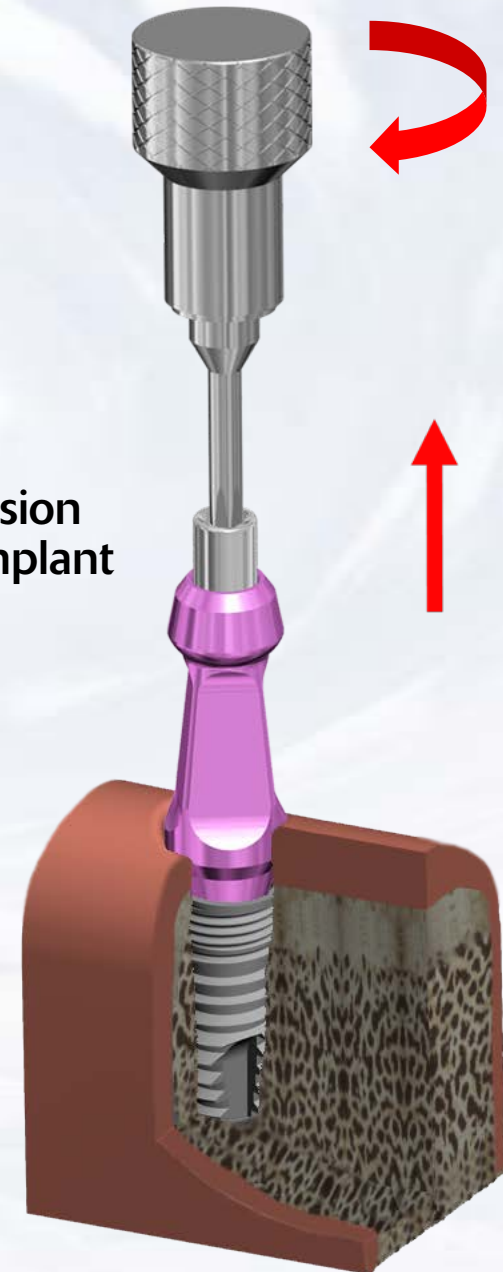
Quattro UCLA Abutment



Use a sharp instrument to remove the wax from the screw

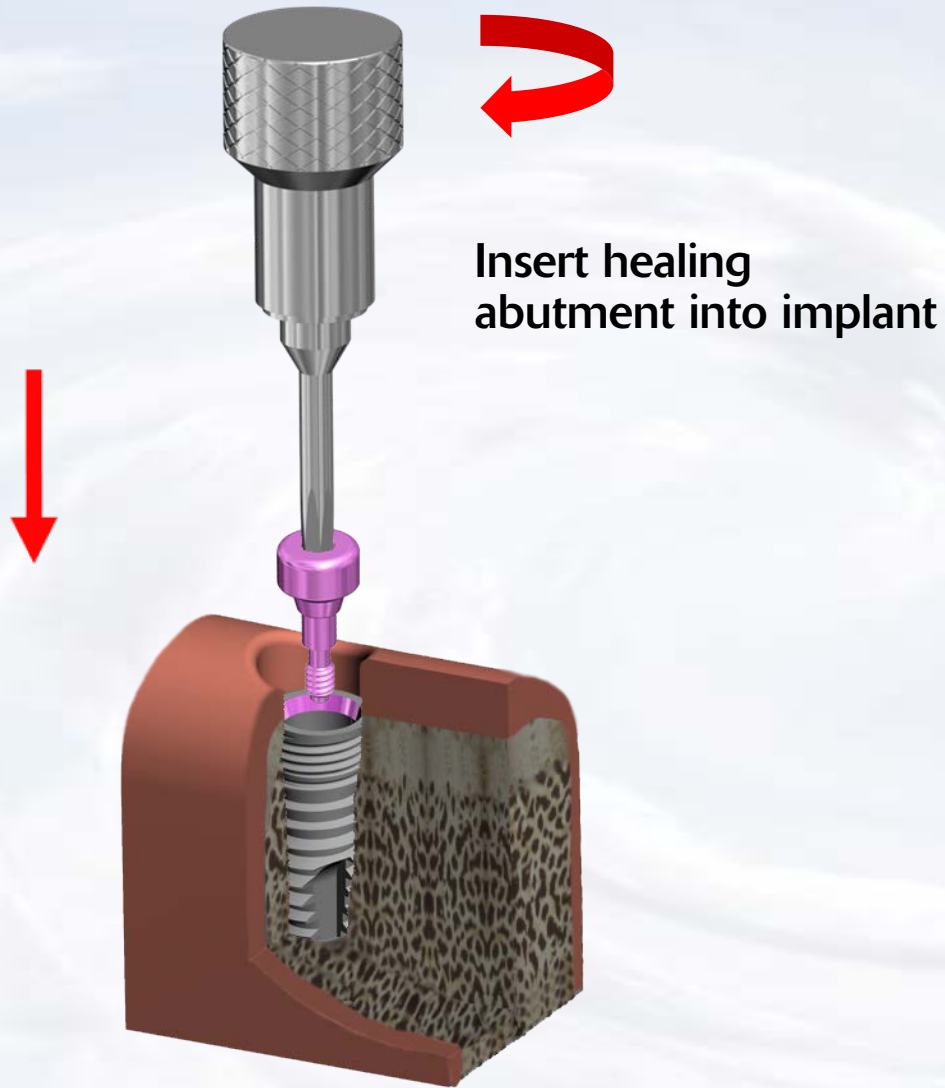


Remove impression transfer from implant



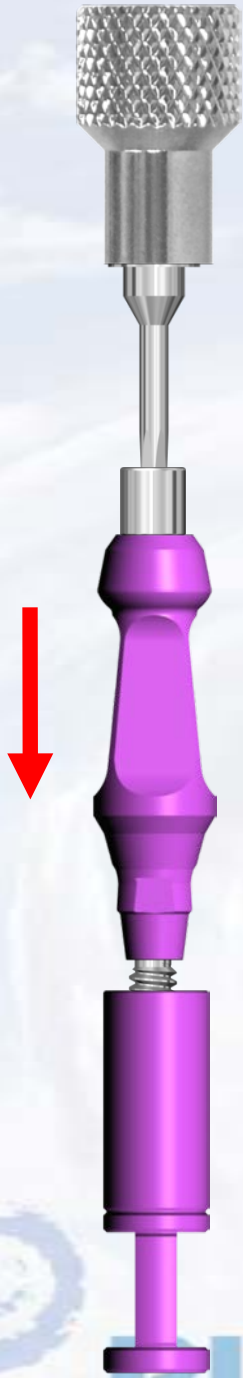
Blue Sky Bio

Quattro UCLA Abutment



Blue Sky Bio

Quattro UCLA Abutment



Insert driver into
Impression Transfer

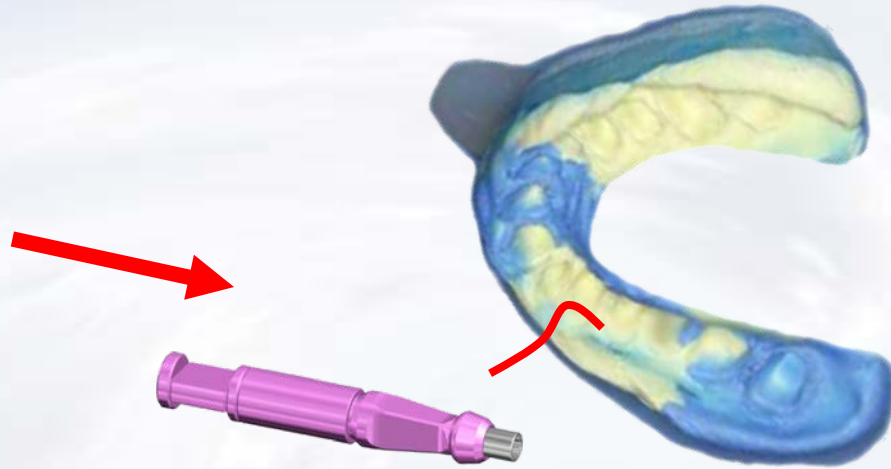


Insert Impression Transfer
into implant level analog and
tighten fixation screw with
finger pressure

Quattro UCLA Abutment



Assembled Impression Transfer with implant level analog



Insert transfer/analog assembly into impression

UCLA Abutment/Analog assembly inside impression



Blue Sky Bio

Quattro UCLA Abutment

Apply soft tissue replica material
around implant level analog



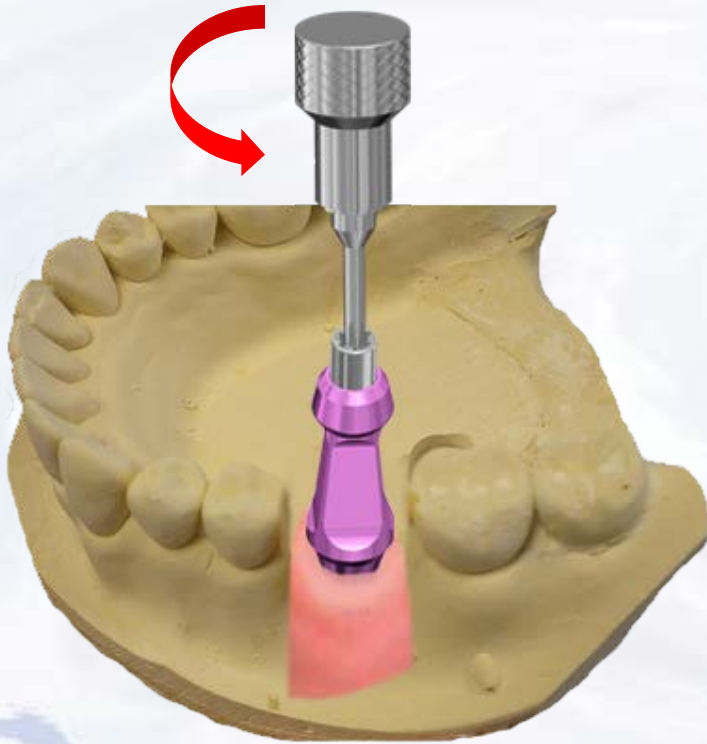
Pour dental stone into impression



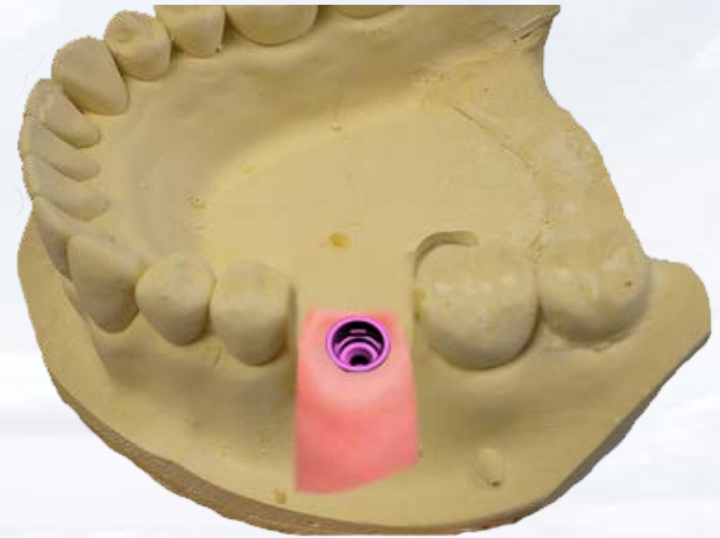
Blue Sky Bio

Quattro UCLA Abutment

Remove model from impression and loosen the fixation screw of the impression transfer by turning screw driver counter clockwise



Remove impression transfer from analog

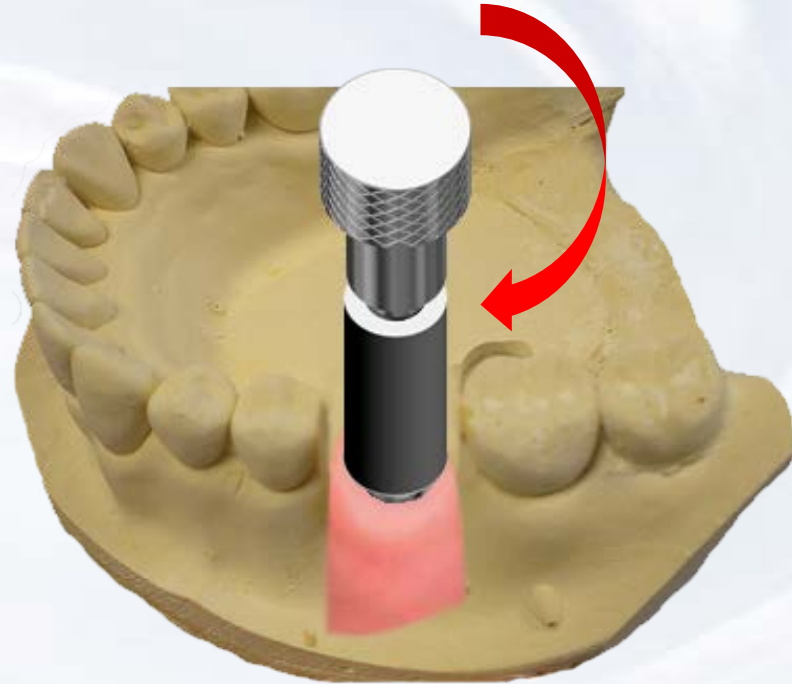


Blue Sky Bio

Quattro UCLA Abutment



Insert screw driver
assembly into
fixation screw in
the UCLA
abutment



Insert the UCLA abutment into the implant level
analog ensuring the appropriate orientation. Hand
tighten the fixation screw within the UCLA
abutment



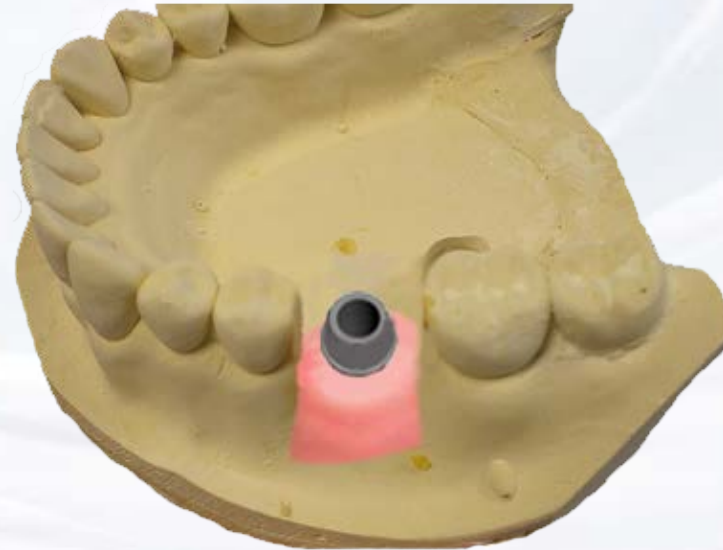
Blue Sky Bio

Quattro UCLA Abutment

Create a wax up of the desired shape of the abutment by subtracting or adding to the resin of the UCLA abutment



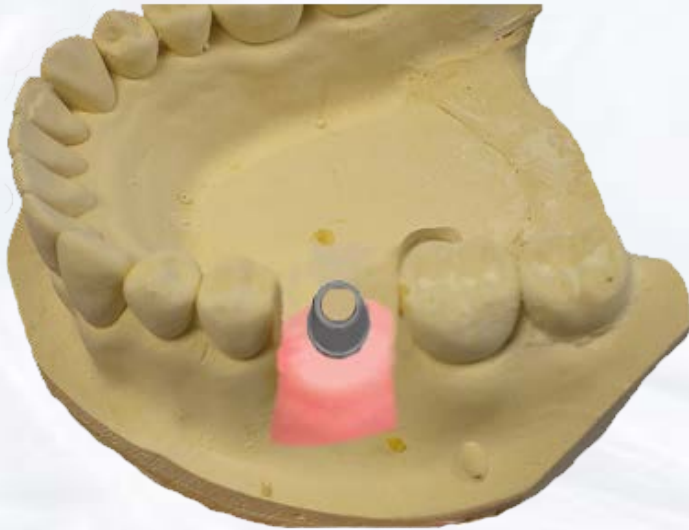
Cast and finish custom UCLA abutment



Blue Sky Bio

Quattro UCLA Abutment

Seal the screw opening of the
UCLA Abutment



Apply die spacer and wax up
undercasting on the UCLA Abutment



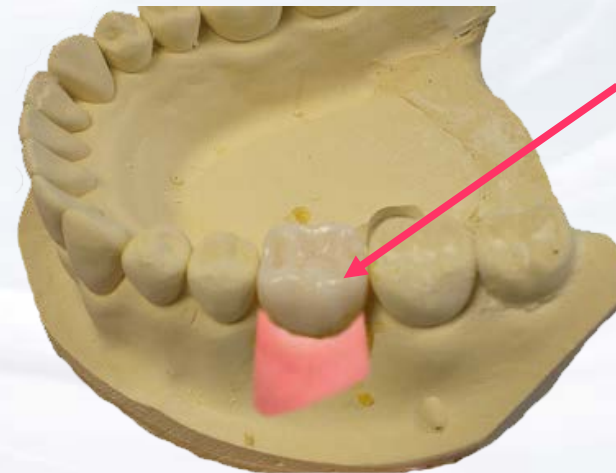
Blue Sky Bio

Quattro UCLA Abutment

Cast wax up using a conventional technique and insert it in the casting on the stone model



Stack and fire the Ceramic in the usual manner

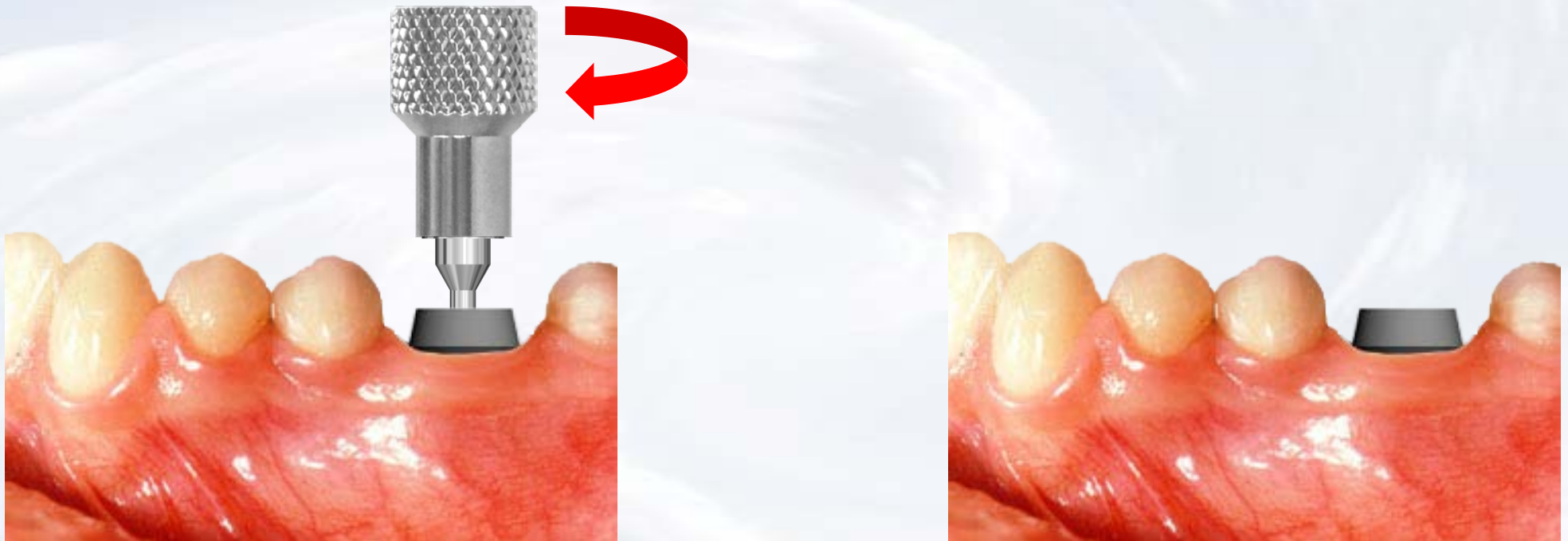


Porcelain crown on model



Blue Sky Bio

Quattro UCLA Abutment



Insert the abutment into implant
orienting it according to the
instructions from the laboratory and
tighten with driver



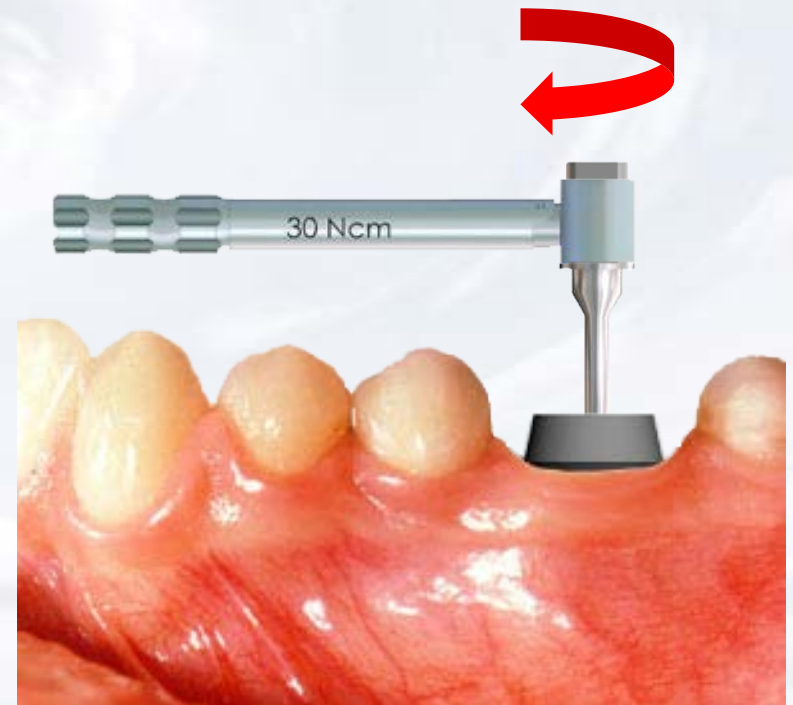
Blue Sky Bio

Quattro UCLA Abutment

Insert the hex driver into the 30Ncm torque ratchet



Insert driver into the abutment screw tighten the screw until torque of 30 Ncm is reached and the head of the ratchet releases



Blue Sky Bio

Quattro UCLA Abutment



Cement restoration on abutment



Blue Sky Bio